



Flight Plan & Site Survey

Created using **RPAS Wilco**®

Operation Name:	Yukon
Pilot Name:	██████████
Pilot Certificate:	██████████
Flight Start:	April 10, 2023 3:53 PM
Flight End:	April 10, 2023 5:53 PM
Flight Area (Latitude):	60° 36' 22.55" N (60.606)
Flight Area (Longitude):	134° 54' 46.01" W (-134.913)
Altitude - Radius:	Alt: 600 ft - Rad: 926.0 m (0.5 nm)
Airspace:	UNCONTROLLED
FIR - Contact:	CZEG - 780-890-8397

Please ensure you received all required authorizations prior to flight.

Disclaimer

This Site Survey was created using RPAS Wilco by AIM Robotics. The flight plan contained is intended only for RPAS flights on the date/time and location specified. The user accepts all responsibility for the accuracy and completeness of the information contained.

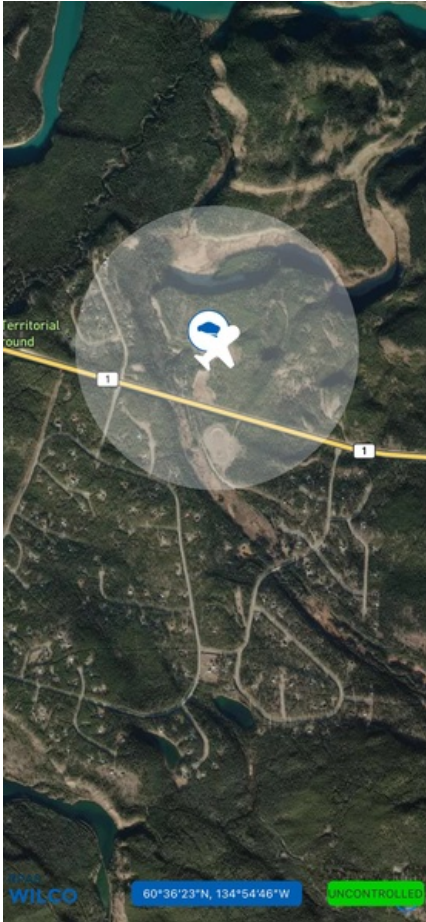
For the complete Terms & Conditions, see

<https://rpswilco.com/#/tnc>



Included

- Site Survey
- Obstacles (if available)
- Nearby Aerodromes
- Canadian Aviation Regulations
- GFA
- Aerodrome Supplements
 - METAR & TAF (if available)
 - NOTAMS
 - CFS

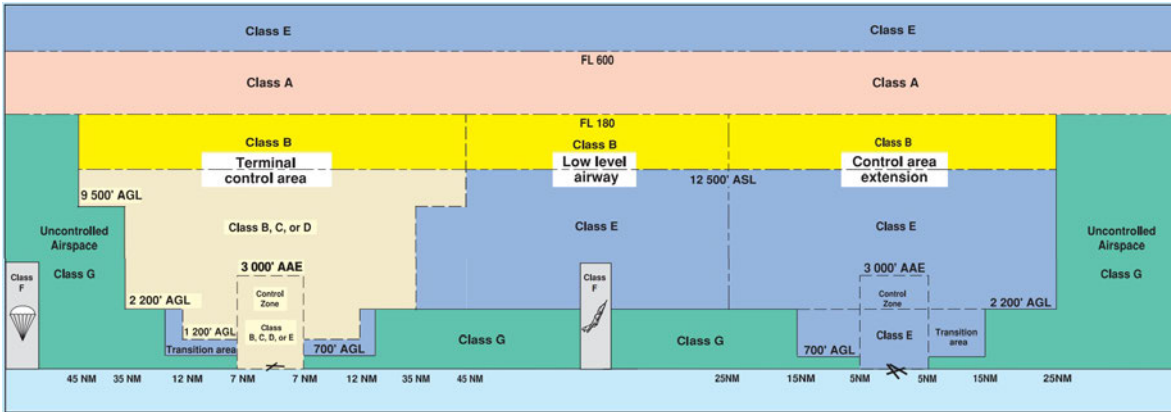
Flight Map



MAP Details

	Latitude	Longitude
 MODEL	60° 36' 22.55" N (60.606)	134° 54' 46.01" W (-134.913)
 Pilot	60° 36' 26.15" N (60.6073)	134° 54' 49.61" W (-134.9138)

Airspace Classification



Overlying Airspaces

Class	Name	Floor	Ceiling
E	Whitehorse Intl, YT TA	700AGL	12500MSL
B	Whitehorse Intl, YT TA	12500MSL	18000MSL
E	V326 Airway	2200AGL	12500MSL
B	V326 Airway	12500MSL	18000MSL
B	T751 Airway	12500MSL	18000MSL
E	T751 Airway	2200AGL	12500MSL

Nearest Aerodromes & Distance from Operation

WHITEHORSE (CEZ5 WATERDROME Reg)	Lat: 60.691	Long: 135.037	11.602 KM	6.26 NM
ERIK NIELSEN INTL (CYXY AERODROME Cert)	Lat: 60.71	Long: 135.068	14.303 KM	7.72 NM
COUSINS (CFP8 AERODROME Reg)	Lat: 60.812	Long: 135.182	27.163 KM	14.67 NM
CARCROSS (CEB7 WATERDROME Reg)	Lat: 60.183	Long: 134.7	48.495 KM	26.19 NM

Canadian Aviation Regulations

Division III — General Operating and Flight Rules

For full listing please visit <https://laws-lois.justice.gc.ca/eng/regulations/SOR-96-433/FullText.html#s-901.27>

Visual Line-of-sight

- **901.11 (1)** Subject to subsection (2) no pilot shall operate a remotely piloted aircraft system unless the pilot or a visual observer has the aircraft in visual line-of-sight at all times during flight.
- **(2)** A pilot may operate a remotely piloted aircraft system without the pilot or a visual observer having the aircraft in visual line-of-sight if the operation is conducted in accordance with a special flight operations certificate — RPAS issued under section 903.03.

Procedures

- **901.23 (1)** No pilot shall operate a remotely piloted aircraft system unless the following procedures are established:
 - **(a)** normal operating procedures, including pre-flight, take-off, launch, approach, landing and recovery procedures; and
 - **(b)** emergency procedures, including with respect to
 - **(i)** a control station failure,
 - **(ii)** an equipment failure,
 - **(iii)** a failure of the remotely piloted aircraft,
 - **(iv)** a loss of the command and control link,
 - **(v)** a fly-away, and
 - **(vi)** flight termination.
- **(2)** If the manufacturer of the remotely piloted aircraft system provides instructions with respect to the topics referred to in paragraphs (1)(a) and (b), the procedures established under subsection (1) shall reflect those instructions.
- **(3)** No pilot shall conduct the take-off or launch of a remotely piloted aircraft unless the procedures referred to in subsection (1) are reviewed before the flight by, and are immediately available to, each crew member.
- **(4)** No pilot shall operate a remotely piloted aircraft system unless the operation is conducted in accordance with the procedures referred to in subsection (1).

Site Survey

901.27 No pilot shall operate a remotely piloted aircraft system unless, before commencing operations, they determine that the site for take-off, launch, landing or recovery is suitable for the proposed operation by conducting a site survey that takes into account the following factors:

- **(a)** the boundaries of the area of operation;
- **(b)** the type of airspace and the applicable regulatory requirements;
- **(c)** the altitudes and routes to be used on the approach to and departure from the area of operation;
- **(d)** the proximity of manned aircraft operations;
- **(e)** the proximity of aerodromes, airports and heliports;
- **(f)** the location and height of obstacles, including wires, masts, buildings, cell phone towers and wind turbines;
- **(g)** the predominant weather and environmental conditions for the area of operation; and
- **(h)** the horizontal distances from persons not involved in the operation.

Operations at or in the Vicinity of an Aerodrome, Airport or Heliport

- **901.47 (1)** No pilot shall operate a remotely piloted aircraft at or near an aerodrome that is listed in the *Canada Flight Supplement* or the *Water Aerodrome Supplement* in a manner that could interfere with an aircraft operating in the established traffic pattern.
- **(2)** Subject to section 901.73 no pilot shall operate a remotely piloted aircraft at a distance of less than
 - **(a)** three nautical miles from the centre of an airport; and
 - **(b)** one nautical mile from the centre of a heliport.
- **(3)** No pilot shall operate a remotely piloted aircraft at a distance of less than three nautical miles from the centre of an aerodrome operated under the authority of the Minister of National Defence unless the operation is conducted in accordance with a special flight operations certificate — RPAS issued under section 903.03.

Records

- **901.48 (1)** Every owner of a remotely piloted aircraft system shall keep the following records:
 - **(a)** a record containing the names of the pilots and other crew members who are involved in each flight and, in respect of the system, the time of each flight or series of flights and
 - **(b)** a record containing the particulars of any mandatory action and any other maintenance action, modification or repair performed on the system, including
 - **(i)** the names of the persons who performed them,
 - **(ii)** the dates they were undertaken,
 - **(iii)** in the case of a modification, the manufacturer, model and a description of the part or equipment installed to modify the system, and
 - **(iv)** if applicable any instructions provided to complete the work.
- **(2)** Every owner of a remotely piloted aircraft system shall ensure that the records referred to in subsection (1) are made available to the Minister on request and are retained for a period of
 - **(a)** in the case of the records referred to in paragraph (1)(a), 12 months after the day on which they are created; and
 - **(b)** in the case of the records referred to in paragraph (1)(b), 24 months after the day on which they are created.
- **(3)** Every owner of a remotely piloted aircraft system who transfers ownership of the system to another person shall, at the time of transfer, also deliver to that person all of the records referred to in paragraph (1)(b).

CANADA WATER AERODROME SUPPLEMENT

Effective 0901Z 24 March 2022 to 0901Z 20 April 2023

AERODROME/FACILITY DIRECTORY B267

WHITEHORSE YT

CEZ5

REF	N60 41 28 W135 02 13 2S 22°E (2012) UTC-7 Elev 2138' A5028 A5099	
OPR	City 867-668-8346 Reg	
PF	C-1,2,3,4,5,6	
CUST	AOE/15 888-226-7277	
FLT PLN	FIG Kamloops 866-WXBRIEF (Toll free within Canada) or 866-541-4101 (Toll free within Canada & USA)	
SERVICES	Call out chg may be levied for one or more svcs. FUEL 100LL, JA S 5 PVT ADV Black Sheep Aviation 867-668-7761 or 867-335-0011	
A/D DATA	Schwatka Lake (dam on Yukon River). Open water Jun-Nov. Area may be used for ski ops dur win months.	
COMM	RCO 123.275 (FISE) 126.7 (bcst) (E) (emerg only 867-393-6758) at land A/D TWR 118.3 236.6 (E) (emerg only 867-667-8426) 04-14Z at land A/D MF rdo 118.3 5NM 5300 ASL 04-14Z around Whitehorse land A/D 2NM NW (CAR 602.98)	
NAV	VOR/DME YXY 116.6 Ch 113 N60 37 08 W135 08 20 (5285')	
CAUTION	Floatplane opr are to taxi well upstream of the hydro-electric intake canal marker buoys to avoid striking the buoys or the log boom which crosses the canal just downstream fr the buoys. Hang/paragliding activity 6NM E, S and W of A/D. Sailing launch on east shore.	

WHITEHORSE FIG - RCO

For a list of Whitehorse RCOs and map, see Planning Section under FISE RCOs.

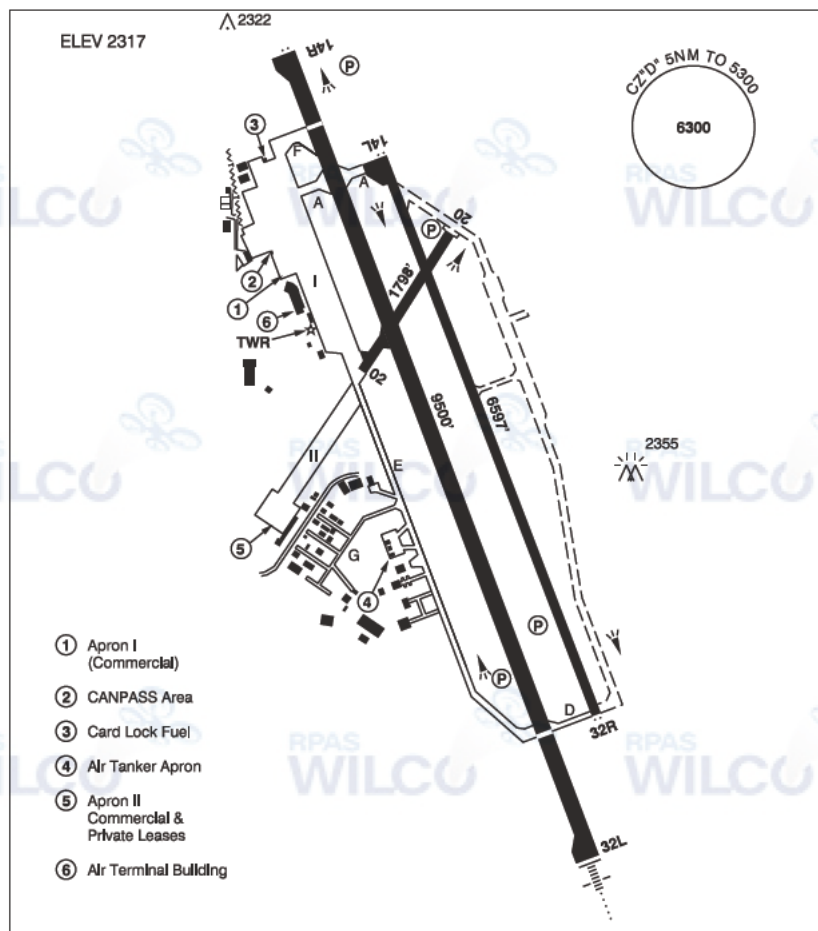
WHITE LAKE ON

CWL2

REF	N45 19 26 W76 29 10 2S 13°W UTC-5 (4) Elev 295' A1905 A5000	
OPR	White Lake Marina 613-623-2568 or 613-204-3140 Reg	
PF	A-1 C-2, 3, 5	
FLT PLN	FIG London 866-WXBRIEF (Toll free within Canada) or 866-541-4104 (Toll free within Canada & USA)	
SERVICES	FUEL MG-3 OIL W100	
AD DATA	Open water mid April to mid Dec DOCKS Depth 4' mud bottom	

WHITEHORSE / ERIK NIELSEN INTL YT

CYXY



REF	N60 42 37 W135 03 58 Adj SE 19°E (2020) UTC-7 Elev 2317' A5028 A5099 LO5 HI2 CAP OC
OPR	Govt of Yukon 867-667-8440 Cert
PF	A-1,2,3,6 avbl 14-04Z C-2,3,4,5,6
CUST	AOE/50 (225 with staged off loading) 888-226-7277 H24 2 hrs PN
FLT PLN	
FIC	Kamloops 866-WXBRIEF (Toll free within Canada) or 866-541-4101 (Toll free within Canada & USA)
ACC	Edmonton IFR 888-358-7526
WX	METAR H24. TAF H24, issue times: 00, 06, 12, 18Z.

YUKON

AERODROME/FACILITY DIRECTORY

WHITEHORSE / ERIK NIELSEN INTL YT (Cont'd)

CYXY

SERVICES	Call out chg may be levied for one or more svcs
FUEL	100LL, JA, JA-1 (FSII avbl)
S	1,2,4,5,6
ARFF	DESIGNATED CAT 7
SUP FL	D & A-ice
PVT ADV	Air Nor h Yukon's Airline 123.5 867-668-2228 Ext 748 14-04Z, North 60 Petro 867-633-8820 14-02Z (cardlock - Visa, Mastercard & North 60 Petro fleet cards)
MIL CON	Air Nor h Yukon's Airline 867-668-2228 Ext 748
RWY DATA	Rwy 14R(140°)/32L(320°) 9500x150 ASPH Thld Rwy 14R displ 843' up 0.43% (last 1400' up 0.79%). Thld Rwy 32L displ 1402'. Rwy 14L(140°)/32R(320°) 6597x100 ASPH Rwy 32R down 0.54%. Rwy 02(015°)/20(195°) 1798x75 ASPH Ltd to 20,000 lbs E of Rwy 14R/32L
RWY CERT	Rwy 14R RVR 1200(1/4sm)/Rwy 32L RVR 1200(1/4sm) AGN IV Rwy 14L/32R AGN IIIB
TWY CERT	Rwy 02/20 AGN II Twy: E, F AGN IIIB Twy G AGN II
TWY RCR	Twy G uncontrolled. Opr Rwy 14R/32L 1300-2330Z Apr 15-Oct 1, 1200-0830Z Oct 2-Apr 14; O/T 2 1/2hrs PN for snow removal. Rwy 02/20 & 14L/32R ltd win maint. CRFI, PLR/PCN.
LIGHTING	14R-SF(TE HI) P2, 32L-AN(TE HI) P2 14L-AS(TE ME) P2, 32R-AS(TE ME) P2
COMM	RCO 123.275 (FISE) 126.7 (bcst) (E) (emerg only 867-393-6758) ATIS 125.25 GND 121.9 14-04Z TWR 118.3 236.6 (E) 14-04Z (emerg only 867-667-8426) MF rdo 118.3 04-14Z 5NM 5300 ASL (CAR 602.98) PAL Edmonton Ctr 132.1 134.15
NAV	NDB LABERGE JB 236 (L) N60 56 58 W135 08 16 ROBINSON PJ 329 (L) N60 26 22 W134 51 40 KLONDIKE ZXY 353 (L) N60 38 10 W135 00 39 VOR/DME YXY 116.6 Ch 113 N60 37 08 W135 08 20 (5285') R-076 is occasionally subject to severe scalloping DME IXY 109 5 Ch 32 N60 42 15 W135 03 39 (2322') ILS IXY 109 5 (Rwy 32L) RVR
PRO	Rgt hand circuits Rwy 32L & 32R (CAR 602.96). PPR for fixed wing acct tkof and ldg off movement area. Tkof Rwy 20 not auth. Ldg Rwy 02 not auth.
CAUTION	Flying tng NW edge of CZ at Cousins aprt to 3200 ASL. Radiosonde balloon launches fr N60 44 19 W135 05 24 (aprx 1.25NM NW thld Rwy 14R on extended rwy ctr line) 1115-1130Z & 2315-2330Z dly with an ascent rate of 1000 ft/min. Power line parallel to Rwy 14R final apch area, aprx 550' W of extended rwy centreline. Hang/paragliding activity within 7NM of A/D.

YUKON

AERODROME / FACILITY DIRECTORY

WHITEHORSE / COUSINS YT

CFP8

REF	N60 48 42 W135 10 56 8NW 22°E (2012) UTC-7 Elev 2200' A5028 A5099	
OPR	Govt of Yukon 867-634-2046 or 867-993-2909 Reg	
PF	C-1,2,3,4,5,6	
FLT PLN		
FIC	Kamloops 866-WXBRIEF (Toll free within Canada) or 866-541-4101 (Toll free within Canada & USA)	
ACC	Edmonton IFR 888-358-7526	
SERVICES	Fuel stor by permit only ctc opr	
RWY DATA	Rwy 12(121°)/30(301°) 2756x100 GRVL	
RCR	Opr No maint	
COMM		
ATF	tfc 123.2 5NM 5200 ASL	
PRO	Circuit alt 2900 ASL tfc to ctc Whitehorse TWR/RDO 118.3 prior to and on completion of circuit or when departing Cousins area. Rgt hand circuits Rwy 30 (CAR 602.96).	
CAUTION	Watch for ruts and soft spots on rwy and apron, tundra tires recommended. Frequent vehicle act on rwy. Verify rwy unobstructed prior to ldg.	

CANADA WATER AERODROME SUPPLEMENT

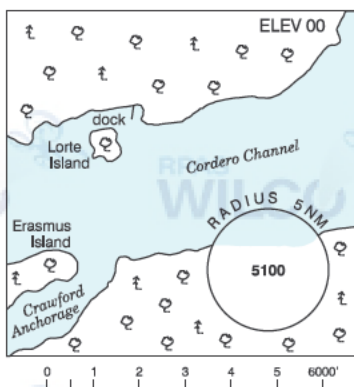
Effective 0901Z 24 March 2022 to 0901Z 20 April 2023

B26 AERODROME/FACILITY DIRECTORY

CAMP CORDERO BC

CAK6

REF	N50 27 W125 28 18°E (2013) UTC-8(7) Elev 00' A5004
OPR	Camp Cordero 250-287-0917 Reg
PF	B-1,2,5
FLT PLN	FIG Kamloops 866-WXBRIEF (Toll free within Canada) or 866-541-4101 (Toll free within Canada & USA)
A/D DATA	Rocky bottom.
COMM	ATF tfc 123.2 2NM 1500 ASL



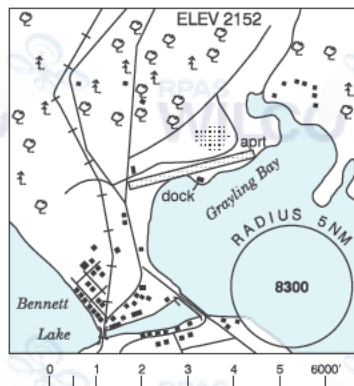
CAMPING PONTBRIAND (HYDRO) QC — See RAWDON / CAMPING PONTBRIAND (HYDRO)

CAPE GEORGE NS — See ST. PETER'S / CAPE GEORGE

CARCROSS YT

CEB7

REF	N60 11 W134 42 Adj 21°E (2013) UTC-7 Elev 2152' A5021 A5028 A5099
OPR	J.E. Lishman 867-821-3204 Reg
PF	C-1,2,3,4,5
FLT PLN	FIG Kamloops 866-WXBRIEF (Toll free within Canada) or 866-541-4101 (Toll free within Canada & USA)
A/D DATA	Tagish Lake. Open water Jun-Oct. Current 1kt. Beaches & slipway. Area may be used for ski ops dur win months.
COMM	ATF tfc 123.2 5NM centred on Carcross land A/D adj 5200 ASL
PRO	Pilots entering Canada must report to Whitehorse Airport for processing 888-226-7277 2 hrs PN
CAUTION	Telegraph wires over bridge SW of A/D.



CARDINAL AVIATION & M5 AVIATION QC — See RIVIÈRE BLANCHE / CARDINAL AVIATION & M5 AVIATION

CAREY LAKE ON — See HEARST / CAREY LAKE